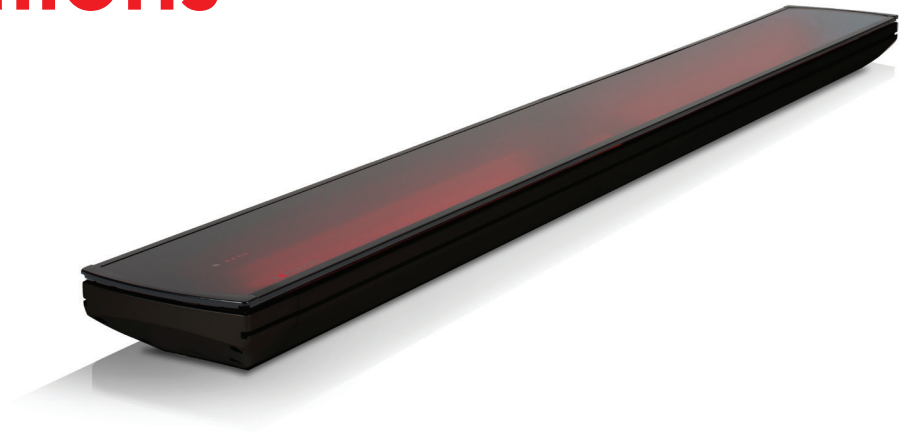
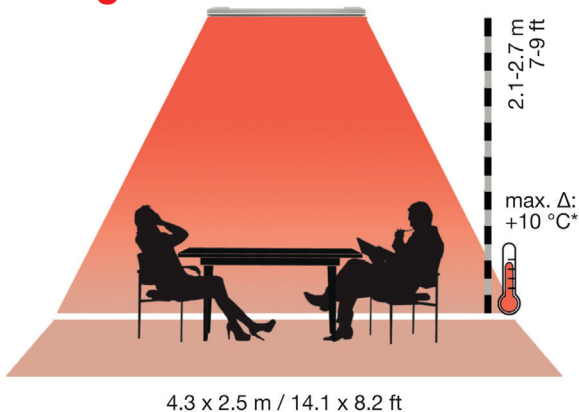


## Vision 3200W specifications



HEATSCOPE® Vision 3200W		
SKU	HTS.VIS.32.WH	HTS.VIS.32.BL
MPN	MHS-VE3200WT.100	MHS-VE3200AB.100
Colours	White	Black
Dimensions (L x W x H)	1660 x 184 x 87 mm	
Weight (approx)	11kg	
Electrical Connection	220 - 240V AC~, 50/60 Hz, 13.91A	
Heat Output	3200W / 10,920 BTU/h	
IP Standard	IP24 (well covered or with optional weather shield)	
Full Heat	30-60 sec.	
Visible Light	< 300 Lumen	
Included Accessories	Brackets for wall or ceiling mounting	
Optional Accessories	Weathershield, Extension Rods	
Compatibility	Dual WiFi Smart Switch (w/ App), ZigBee Wireless Switch (Remote Control), ZigBee Motion Sensor (extra parts required)	

### Heating area



\*Values are approximate. Max. temperature increases achievable in enclosed spaces at 16°C (dependent on the respective installation conditions and mounting height).

Disclaimer: All product specifications and data are subject to change without notice and believed to be correct at the time of publication. MAD Design Group (MDG), its affiliates, agents, and employees, and all persons acting on its or their behalf (collectively, "MAD Design Group"), disclaim any and all liability for any errors, inaccuracies or incompleteness contained herein or in any other disclosure relating to any product. MDG disclaims any and all liability arising out of the use or application of any product described herein or of any information provided herein to the maximum extent permitted by law. The product specifications do not expand or otherwise modify MDG's terms and conditions of purchase, including but not limited to the warranty expressed therein, which apply to these products. No license, express or implied, by estoppel or otherwise, to any intellectual property rights is granted by this document or by any conduct of MDG. Customers using or selling MDG products not expressly indicated for use in such applications do so entirely at their own risk and agree to fully indemnify MDG for any damages arising or resulting from such use or sale. Please contact authorised personnel from MDG to obtain written terms and conditions regarding products designed for such applications. Images are indicative only.